



# ASPIRE

— TO MOVE —



## Walcot Street, Bath, BA1

Located in the heart of Bath on Walcot Street, this charming studio apartment offers a fantastic opportunity for city living. Situated in a prime location from local amenities. With Bath Spa train station just 0.8 miles away, commuting is made easy for residents of this studio apartment.

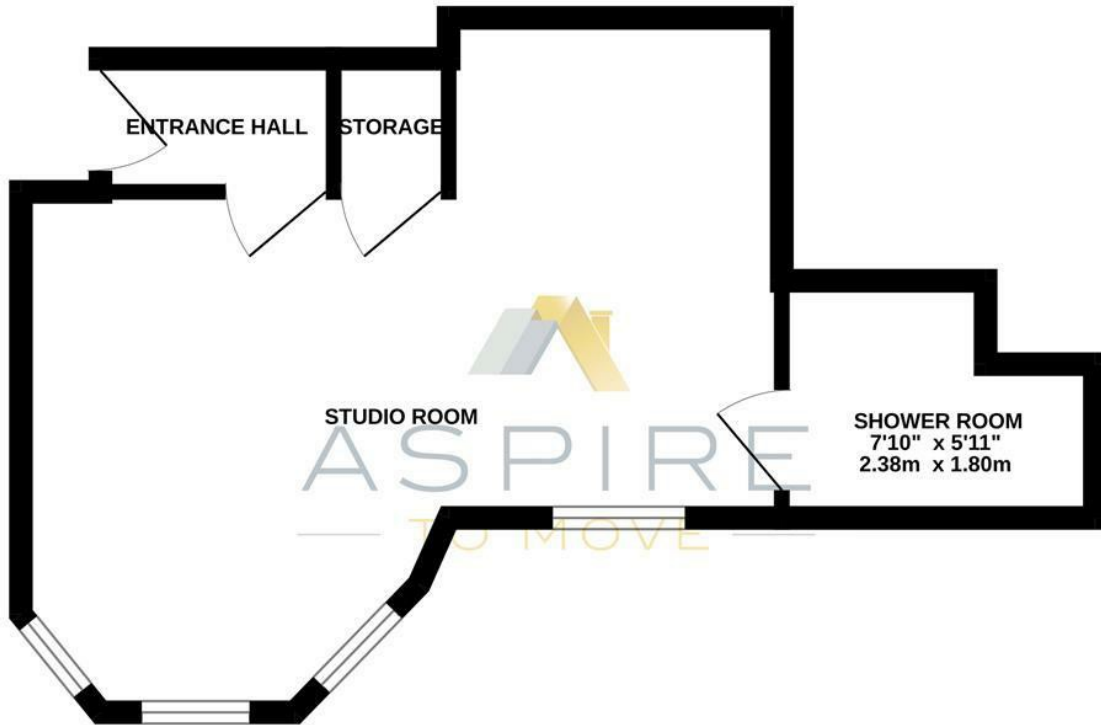
Offered unfurnished and available from the 11th June 2026.

- Studio apartment
- Available 11th June 2026
- Unfurnished
- White goods included
- Council Tax Band - A, £1550.18
- Holding deposit - £265
- Central location
- Video viewing available
- Assured Periodic Tenancy

**£1,150 PCM**

# Floor Plans

FIRST FLOOR  
300 sq.ft. (27.9 sq.m.) approx.

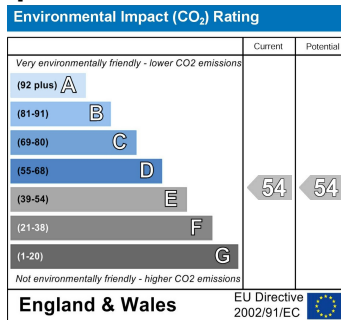
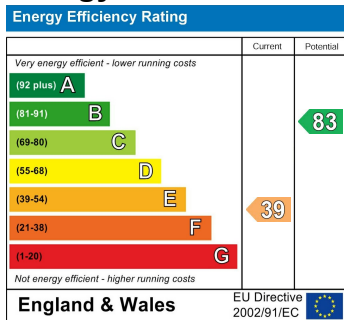


LADYMEAD HOUSE, BATH, BA1

TOTAL FLOOR AREA : 300 sq.ft. (27.9 sq.m.) approx.

Whilst every attempt has been made to ensure the accuracy of the floorplan contained here, measurements of doors, windows, rooms and any other items are approximate and no responsibility is taken for any error, omission or mis-statement. This plan is for illustrative purposes only and should be used as such by any prospective purchaser. The services, systems and appliances shown have not been tested and no guarantee as to their operability or efficiency can be given.  
Made with Metropix ©2024

## Energy Performance Graph



These particulars, whilst believed to be accurate are set out as a general outline only for guidance and do not constitute any part of an offer or contract. Intending purchasers should not rely on them as statements of representation of fact, but must satisfy themselves by inspection or otherwise as to their accuracy. No person in this firm's employment has the authority to make or give any representation or warranty in respect of the property.